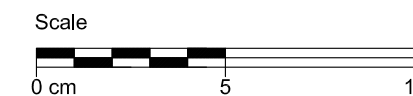


LEGEND

- 12. RHEINZINK Shiplap Panel - Fascade
 - a. Standard panel
- 16. RHEINZINK Building Profile
 - k. Cill profile slope >3°
- 18. Support Profile
 - a. Galvanised steel
 - b. Aluminium
- 19. Separating Layer
 - a. Structured underlay VAPOZINC®
- 20. Substructure *
 - c. Bracket system with thermal break
- 23. Supporting Structure
- 24. Window Foil
- 25. Thermal Insulation
- 30. Ventilation Air Space
 - a. Ventilation gap >20mm

* Refer to manufacturer's guidelines



STANDARD DETAIL

| | | |
|---|----------------------------|----------|
| Window Cill +flush profile - Option 2 | Title | Scale |
| | | 1:2 |
| | | Size |
| | | A3 |
| | Detail-Nr. | Drawn |
| | 09031202010521000002_GB_en | WGM |
| | | Date |
| | | 24.08.12 |

The detail describes an optional design in standard cases based on a European climate. Any user of this document is responsible to verify the feasibility of the solution with respect to the specific local situation and conditions. Using the documents provided by RHEINZINK is a service, which excludes liability for damages or claims of any kind. Contingent liability for malice or gross negligence is unaffected.